

DIN RAIL MOUNTING 30 Watt Power Supply



- Low Cost
- Universal Input Voltage Range
- High Efficiency
- Build in EMI Filter
- Low Ripple and noise
- 105°C Capacitors
- Air Convection Cooling
- Overload Protection
- Reverse Voltage Protection
- Class II Isolation
- Case 5 slots Industry Standard
- Case material UL Vo resisting up to 220°C

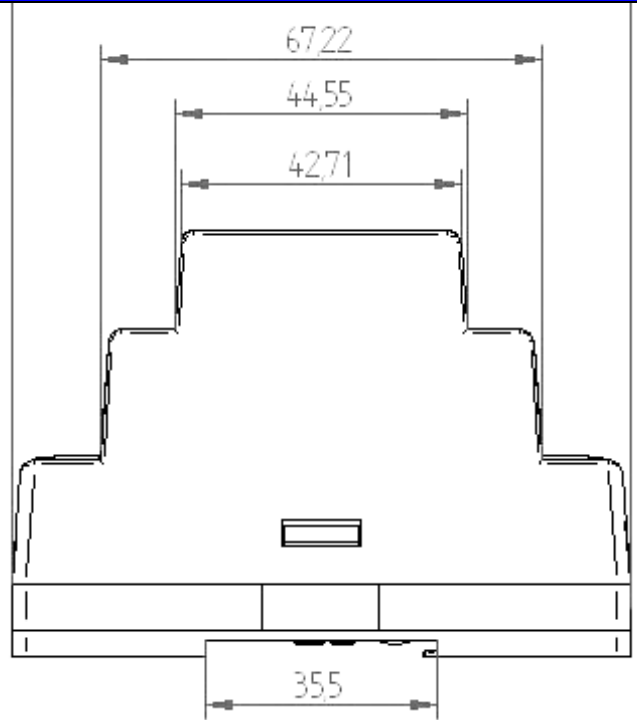
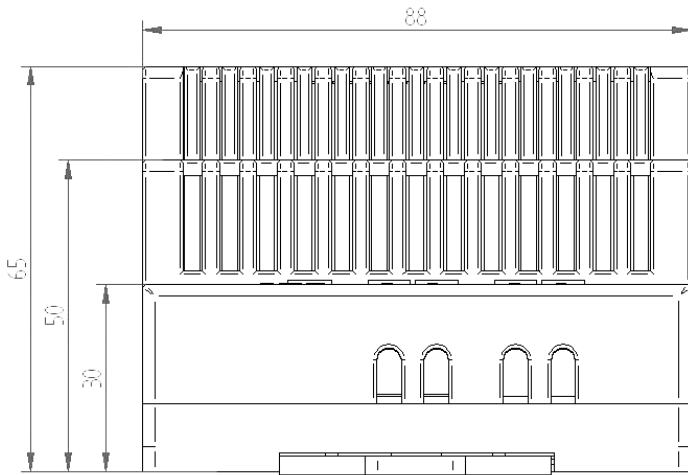
Model	Output Voltage	Output Current	Ripple & Noise	Voltage Adjust. Range	Efficiency typ.230VAC
RS30-12	12 V	0 ~ 2,50 A	1% Vout	± 10 %	83 %
RS30-15	15 V	0 ~ 2,00 A	1% Vout	± 10 %	84 %
RS30-24	24 V	0 ~ 1.25 A	1% Vout	± 10 %	86 %
RS30-28	28 V	0 ~ 1,10 A	1% Vout	± 10 %	86 %
RS30-48	48 V	0 ~ 0,65 A	1% Vout	± 10 %	87 %

GENERAL SPECIFICATIONS

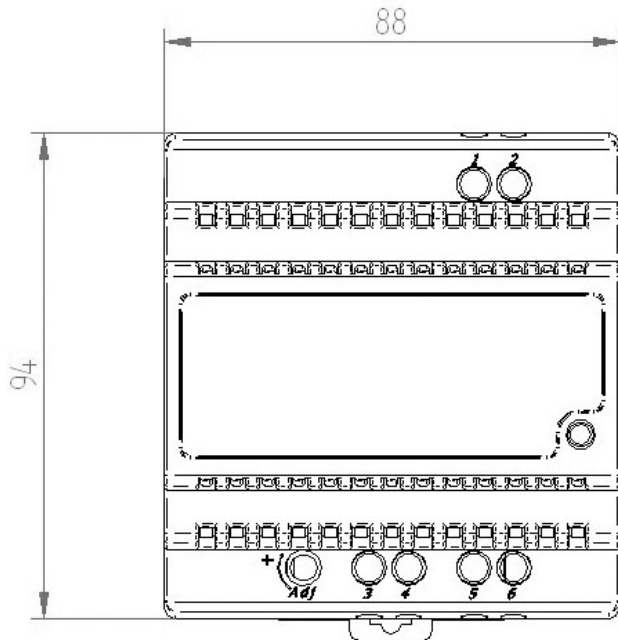
Input	AC voltage range	100 ~ 264
	DC voltage range	142 ~ 370
	Input current	Typ. 0,6/115 – 0,4/230VAC
	Inrush current	35 A typ. at 230 VAC, Cold start
	Frequency range	47 ~ 63 Hz
	Under voltage protection	< 90 VAC
	Output	DC voltage
Current		See table
Ripple and noise		1 % p-p Vout, measured at 20MHz of bandwidth by using a 12" twisted pair-wire terminated with a 0.1uf & 47uf parallel capacitor.
Load regulation		± 1% max
Line regulation		± 1% max
Overload protection		~ 130% I nom
Short circuit protection		Permanent / auto restart
Hold up time		50 ms at 230 VAC/Full load - 15 ms at 100 VAC/Full load
Environment	Reverse voltage protection	YES
	Operating temperature	-20+45 °C derating 2,5%/°C>40°C (Vertical position)
	Storage temperature	-40 + 85 °C
Safety	Humidity	20 ~ 90 % RH non condensing
	Safety standard	EN 45950-1, UL45950-1, TUV
	Withstand voltage	I/O 3KVAC
	EMI	Comply to EN55011, EN55022 (CISPR) ClassB
	Immunity	Comply to EN61000-4-2,3,4,5,6,8,11



MECHANICAL SPECIFICATION



CONNECTION



1	AC Live
2	AC Neuter
3	- Vout
4	- Vout
5	+ Vout
6	+ Vout

Mounting on DIN Rail
TS-35/7.5 or 15

TPI Electronic Co, Ltd
552/4 Moo 10, 304 Industrial Park
Thatoom Subdistrict, Srimahaphot District
Prachinburi Province - 25140 THAILAND
Tel: 663 741 4214 - Fax: 663 741 4217
www.tpi-e.com sales@tpi-e.com

