

DIN RAIL MOUNTING 60 Watt Battery Charger



- Low Cost
- Universal Input Voltage Range
- High Efficiency
- Build in EMI Filter
- Low Ripple and noise
- 105°C Capacitors
- Air Convection Cooling
- Overload Protection
- Reverse Voltage Protection
- Class II Isolation
- Case 5 slots Industry Standard

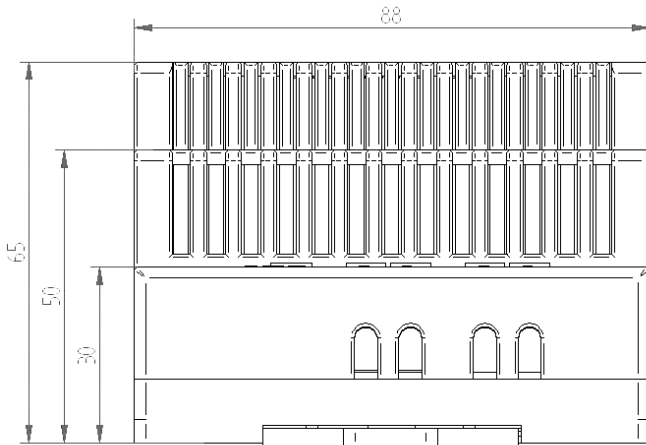
Model	Output Voltage	Output Current	Ripple & Noise	Max. Charging Current	Efficiency typ.230VAC
RSCB60-12	13.8 V	0 ~ 4,35 A	1% Vout	700 mA	83 %
RSCB60-24	27.6 V	0 ~ 2,20 A	1% Vout	400 mA	86 %

GENERAL SPECIFICATIONS

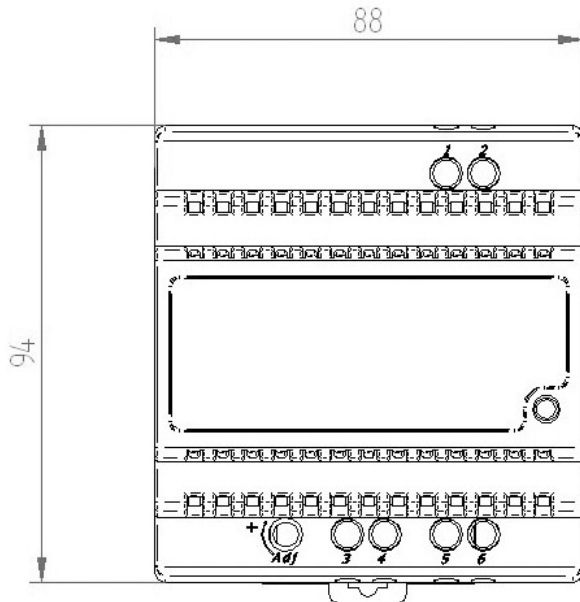
Input	AC voltage range	100 ~ 264
	DC voltage range	142 ~ 370
	Input current	Typ. 0,6/115 – 0,4/230VAC
	Inrush current	35 A typ. at 230 VAC, Cold start
	Frequency range	47 ~ 63 Hz
	Under voltage protection	< 90 VAC
Output	DC voltage	See table
	Current	See table
	Ripple and noise	1 % p-p Vout, measured at 20MHz of bandwidth by using a 12" twisted pair-wire terminated with a 0.1uf & 47uf parallel capacitor.
	Load regulation	± 1% max
	Line regulation	± 1% max
	Overload protection	~ 130% I nom
	Short circuit protection	Permanent / auto restart
	Hold up time	80 ms at 230 VAC/Full load - 20 ms at 100 VAC/Full load
Environment	Reverse voltage protection	YES
	Operating temperature	-20+45 °C derating 2,5%/°C>40°C (Vertical position)
	Storage temperature	-40 + 85 °C
Safety	Humidity	20 ~ 90 % RH non condensing
	Safety standard	EN 60950-1, UL60950-1, TUV
	Withstand voltage	I/O 3KVAC
	EMI	Comply to EN55011, EN55022 (CISPR) ClassB
	Immunity	Comply to EN61000-4-2,3,4,5,6,8,11



MECHANICAL SPECIFICATION



CONNECTION



1	AC Live
2	AC Neuter
3	- Vout
4	+ Vout
5	- Batt
6	+ Batt

Mounting on DIN Rail
TS-35/7.5 or 15

TPI Electronic Co, Ltd
552/4 Moo 10, 304 Industrial Park
Thatoom Subdistrict, Srimahaphot District
Prachinburi Province - 25140 THAILAND
Tel: 663 741 4214 - Fax: 663 741 4217



www.tpi-electronic.com